



**Gobierno de Guatemala**

Secretaría de Planificación y Programación  
de la Presidencia -Segeplan-

# SGA IN THE GUATEMALAN NATIONAL PLANNING SYSTEM PERSPECTIVE

**-Subsecretaria de Planificación y Ordenamiento Territorial-**



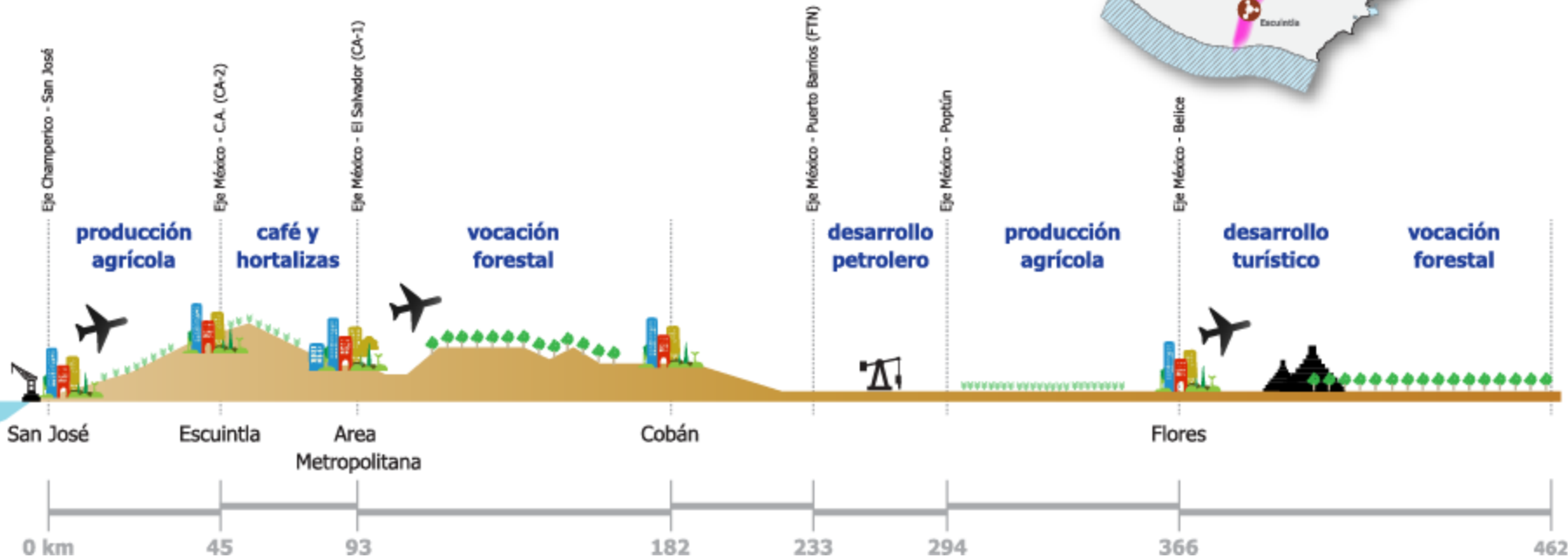
**GUATEMALA**  
15 MILLIONS PEOPLE  
110,000 KM2  
25 LANGUAGES  
6TH UNDER NUTRIFIED  
COUNTRY



# This is Guatemala...

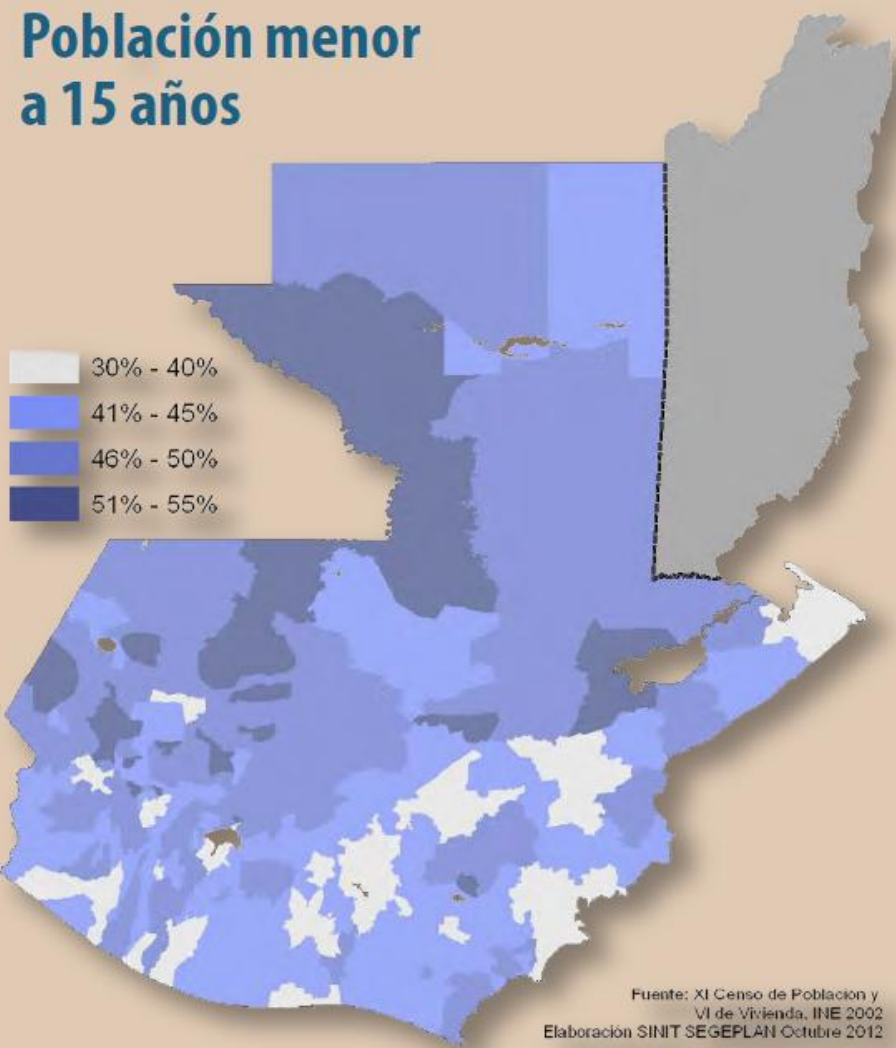


# A mega diverse country...



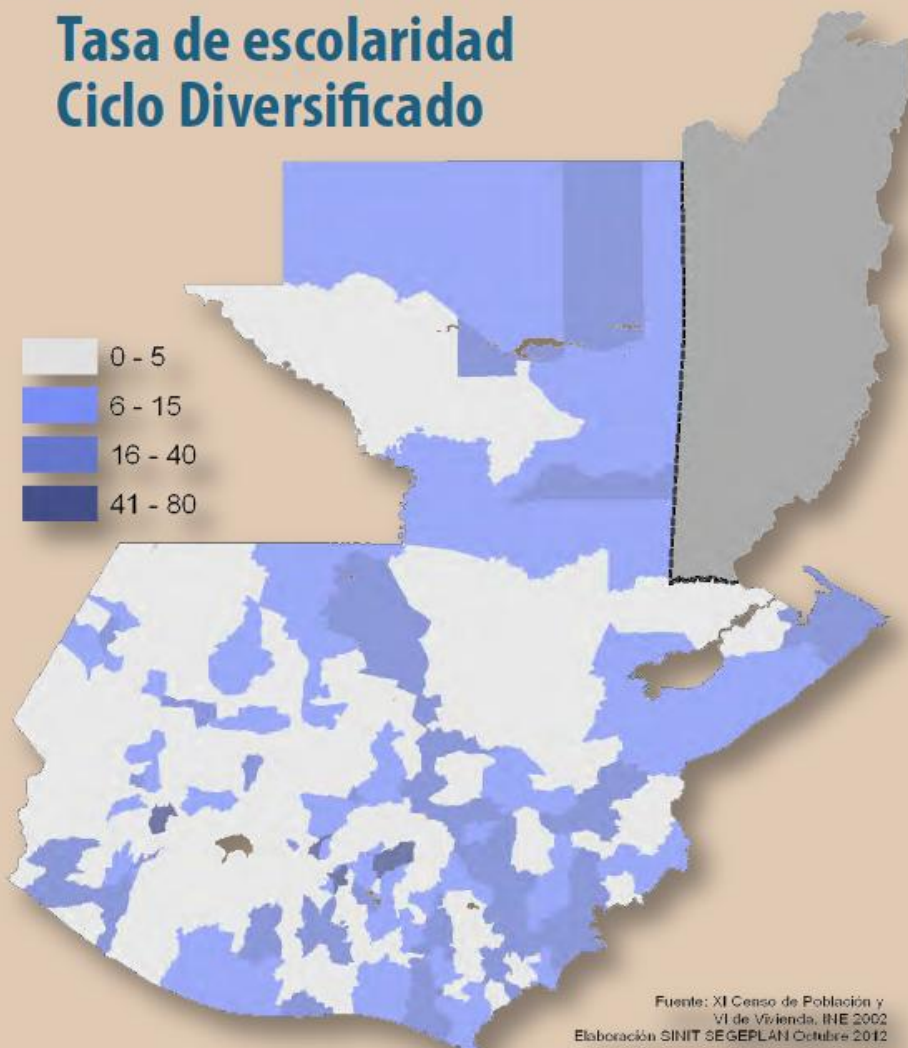
# With huge challenges and opportunities...

## Población menor a 15 años



Fuente: XI Censo de Población y VI de Vivienda, INE 2002  
Elaboración SINIT SEGEPLAN Octubre 2012

## Tasa de escolaridad Ciclo Diversificado



Fuente: XI Censo de Población y VI de Vivienda, INE 2002  
Elaboración SINIT SEGEPLAN Octubre 2012



# Natural events..

**Mitch**  
**1998**



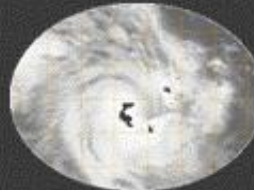
**Sequía**  
**2001**



**Stan**  
**2005**



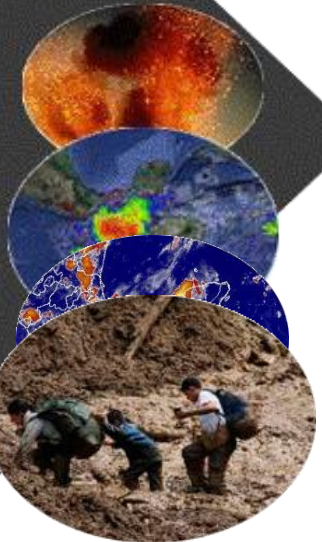
**Tormenta 16**  
**La Unión**  
**2008**



**Sequía**  
**Atitlán**  
**2009**



**Pacaya**  
**Agatha**  
**DT 11E**  
**Lluvias**  
**intensas**  
**Mathew**  
**2010**



**3 años**

**4 años**

**3 años**

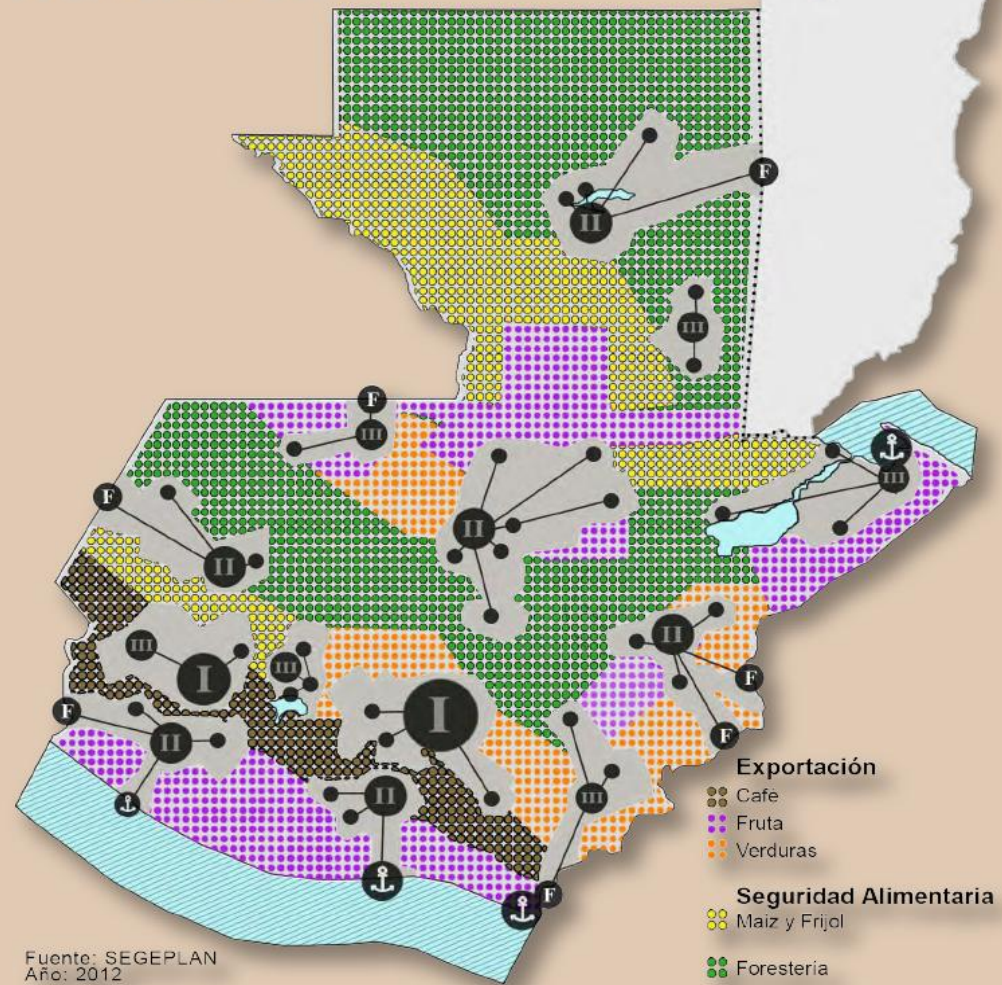
**2 años**

**9 meses**

•Earthquakes (2012)

A country which  
needs a strong  
planning system

Población rural  
7 millones de 22



# What is SEGEPLAN?

---

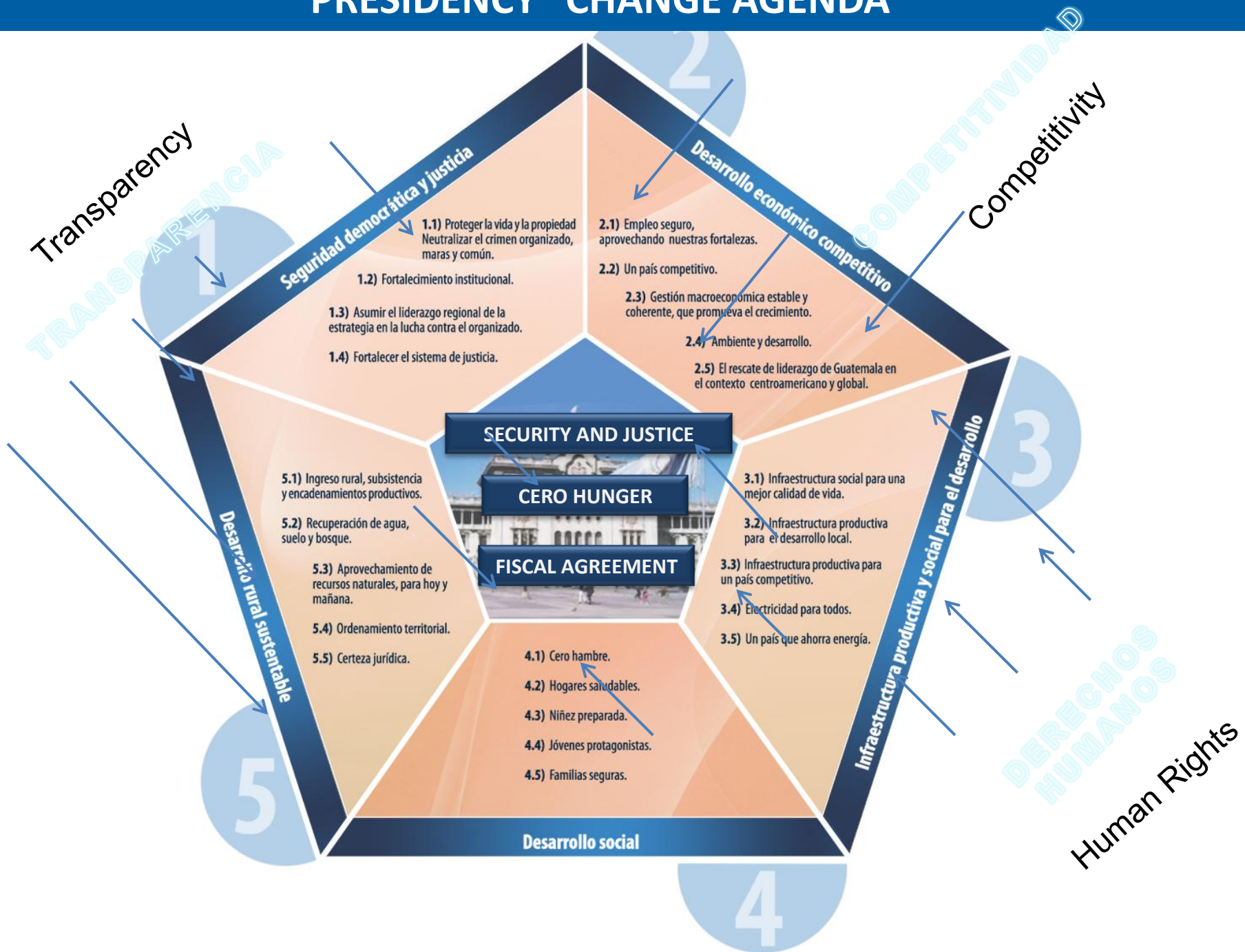
## *Executive Organism Law 1997*

- ❑ **State** Planning Institution, supporting the **Presidency** of Guatemala.
- ❑ Supports the formulation of **National Development Policies**, and evaluate his execution and effects
- ❑ **Orients the sector and territorial public policies** trough the planning and programming of public investment
- ❑ Acts as the secretary of the **National Council System for Urban and Rural Development**, for participating territorial planning
- ❑ Supports the alignment of **International Cooperation** in the Paris Declaration framework





# PRESIDENCY "CHANGE AGENDA"



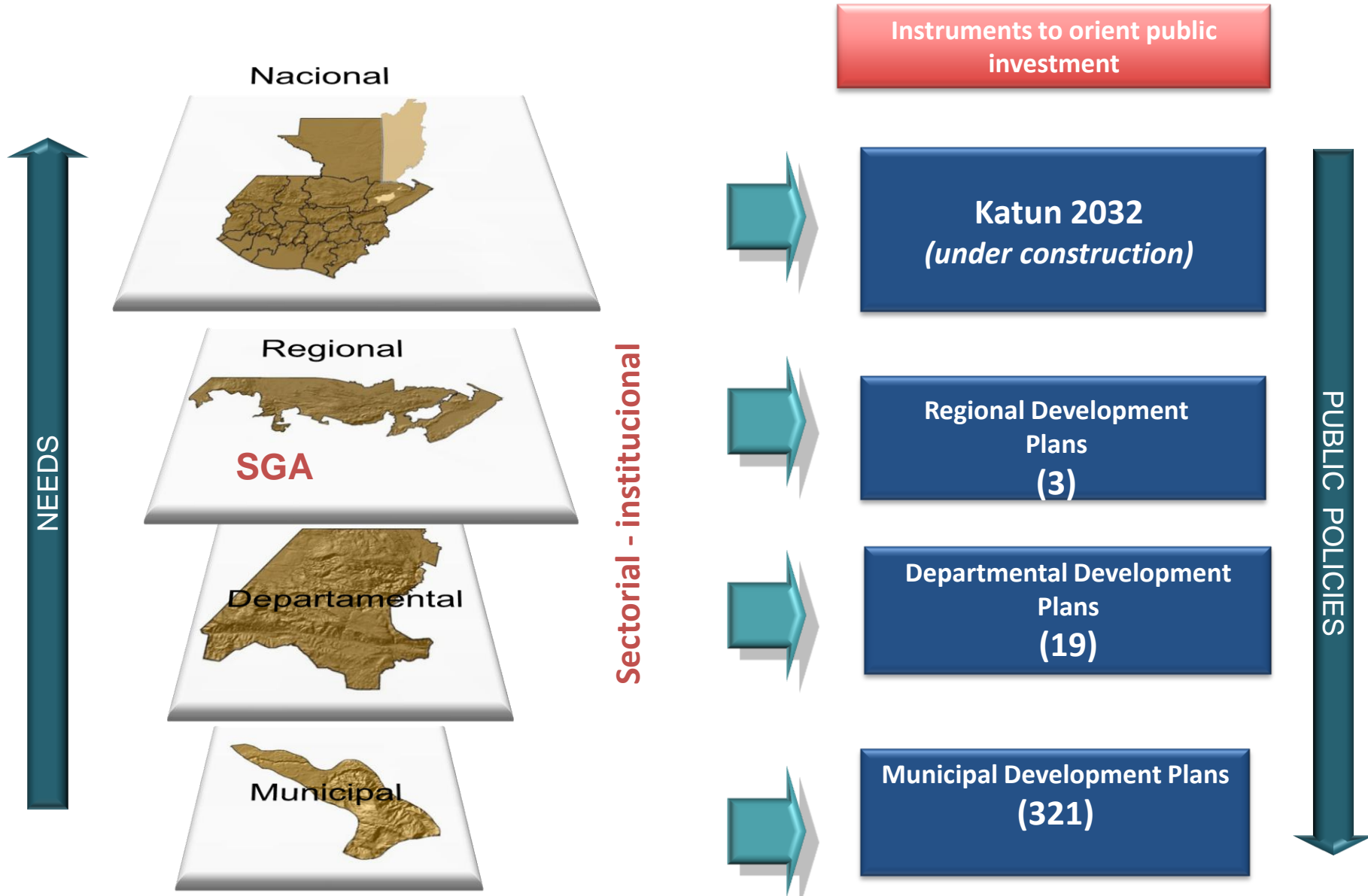
# PLANNING NATIONAL SYSTEM

---



- Articulate **Policy - Plan – Budget** in a result oriented management process
- Sector investments and Society agreements **with spatial focus** (regional, departamental y municipal level)
- Monitoring, register and **transparency** of public investments
- **Risk and Land management** articulate with public investments decision
- Participatory and **indigenous** perspective

# RESULTS OF N.P.S



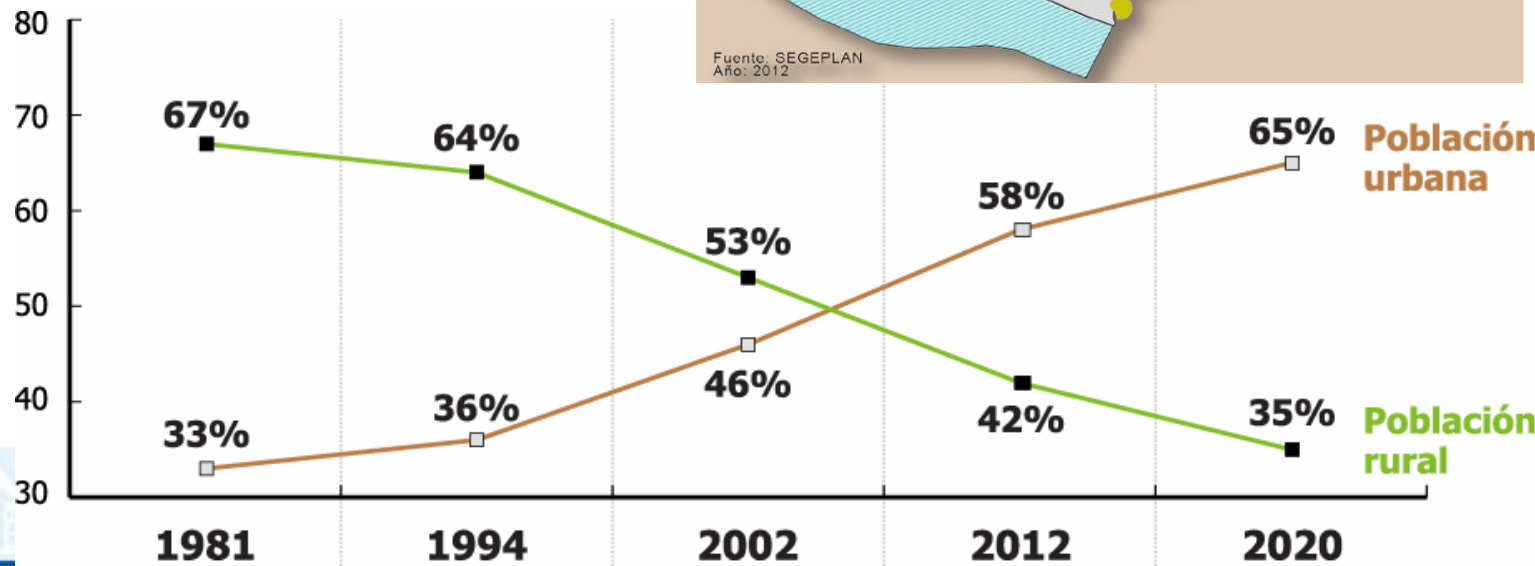
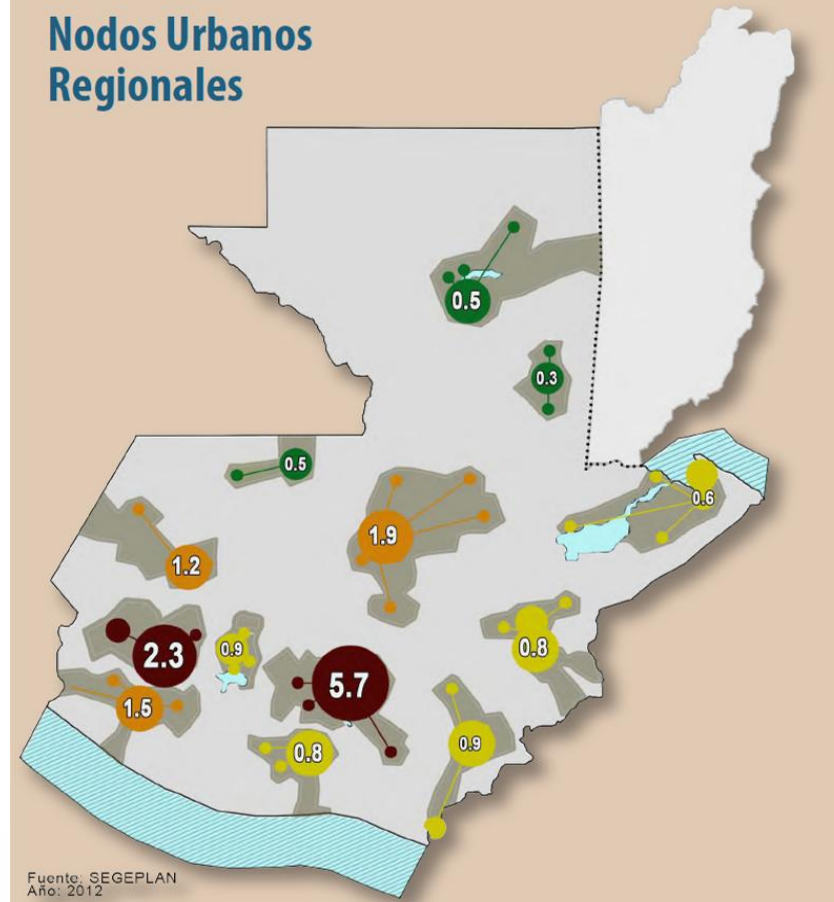


# K'atun

Nuestra Guatemala

# 2023

## Nodos Urbanos Regionales

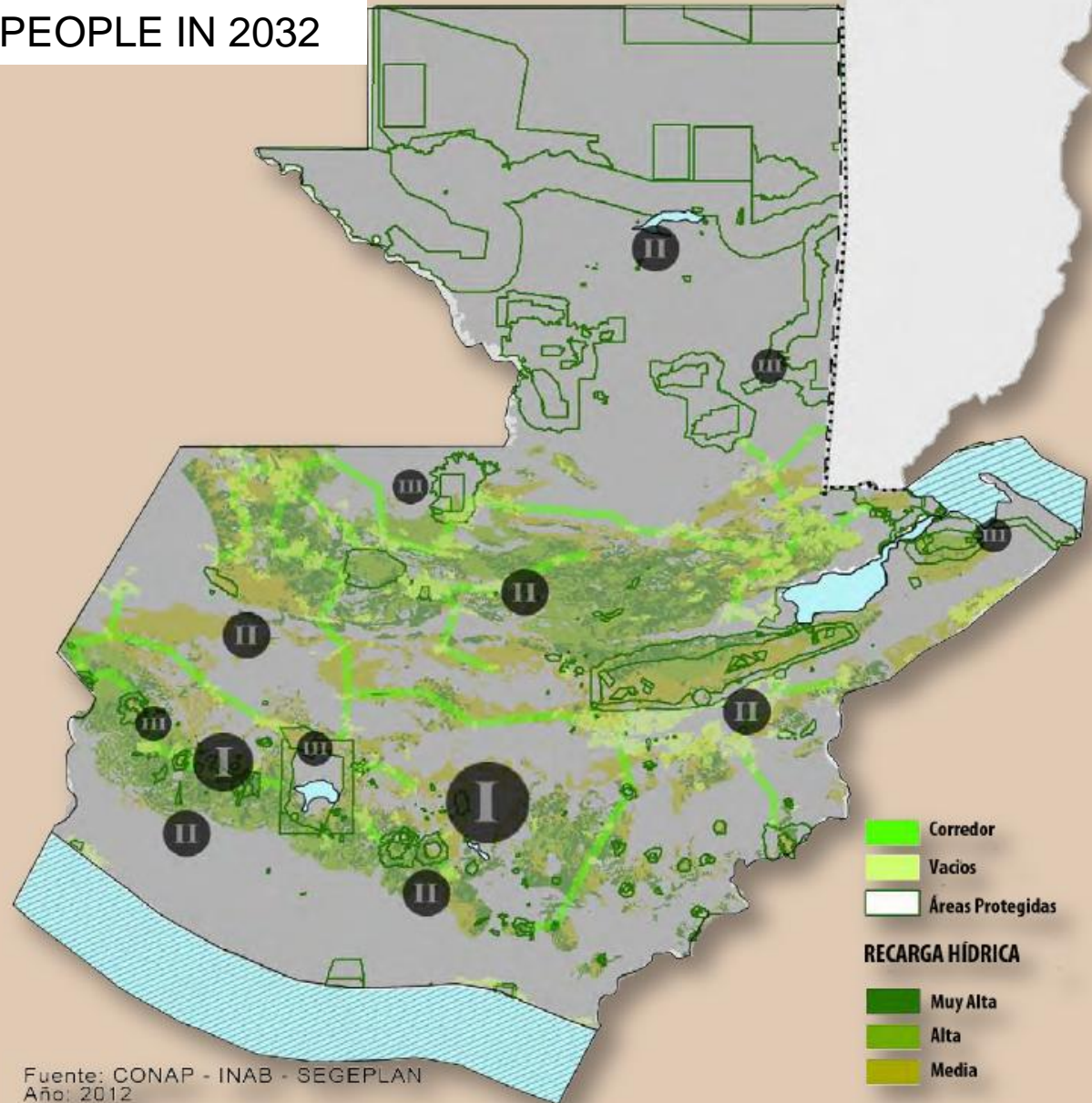


# Planning as a participative process



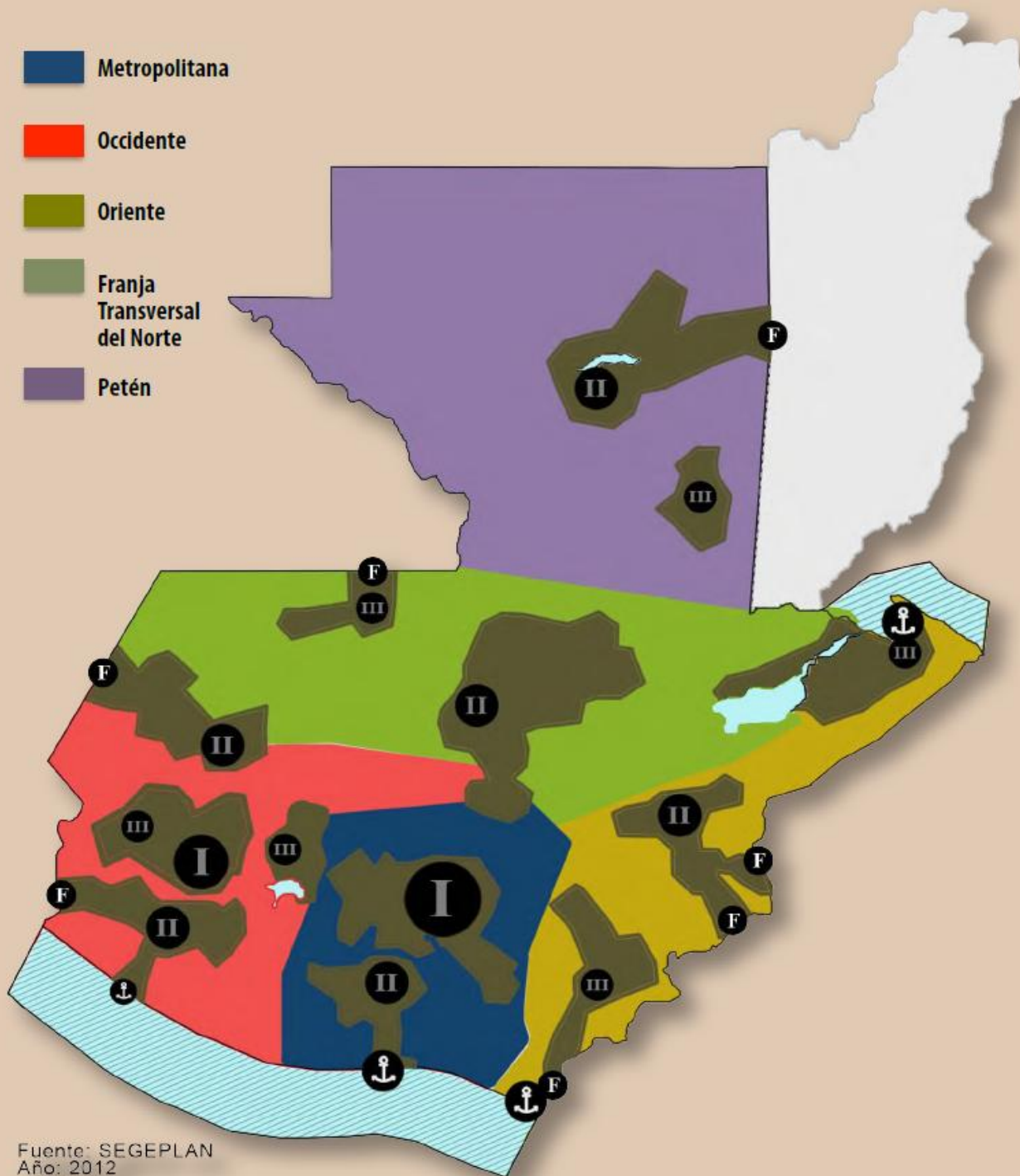
FORESTS FOR  
WATER FOR 22  
MILLIONS  
PEOPLE IN 2032

Obligation to  
plan the  
ecosystems  
services in a  
national  
perspective



Fuente: CONAP - INAB - SEGEPLAN  
Año: 2012





**And adapt it according to regional contexts**

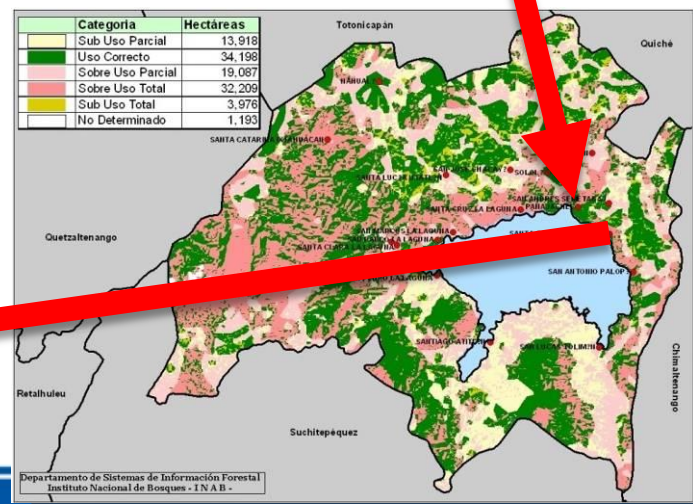
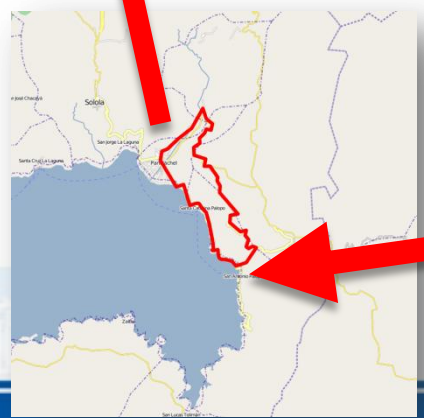
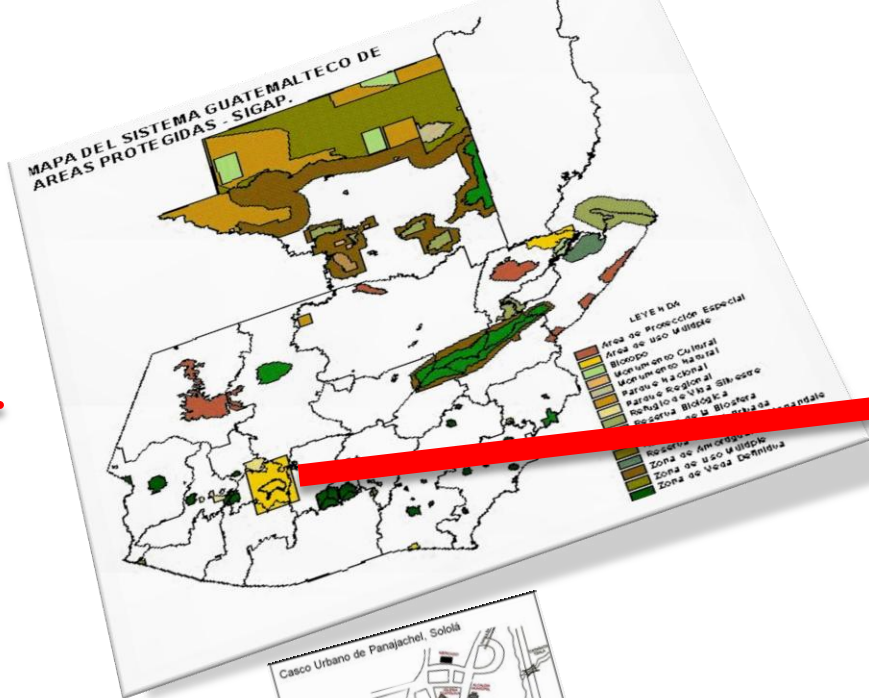
# Watershed planning



Human Being transformation

Water Governance and planning





## Local applying of national regulations

- Zoning
- Land management





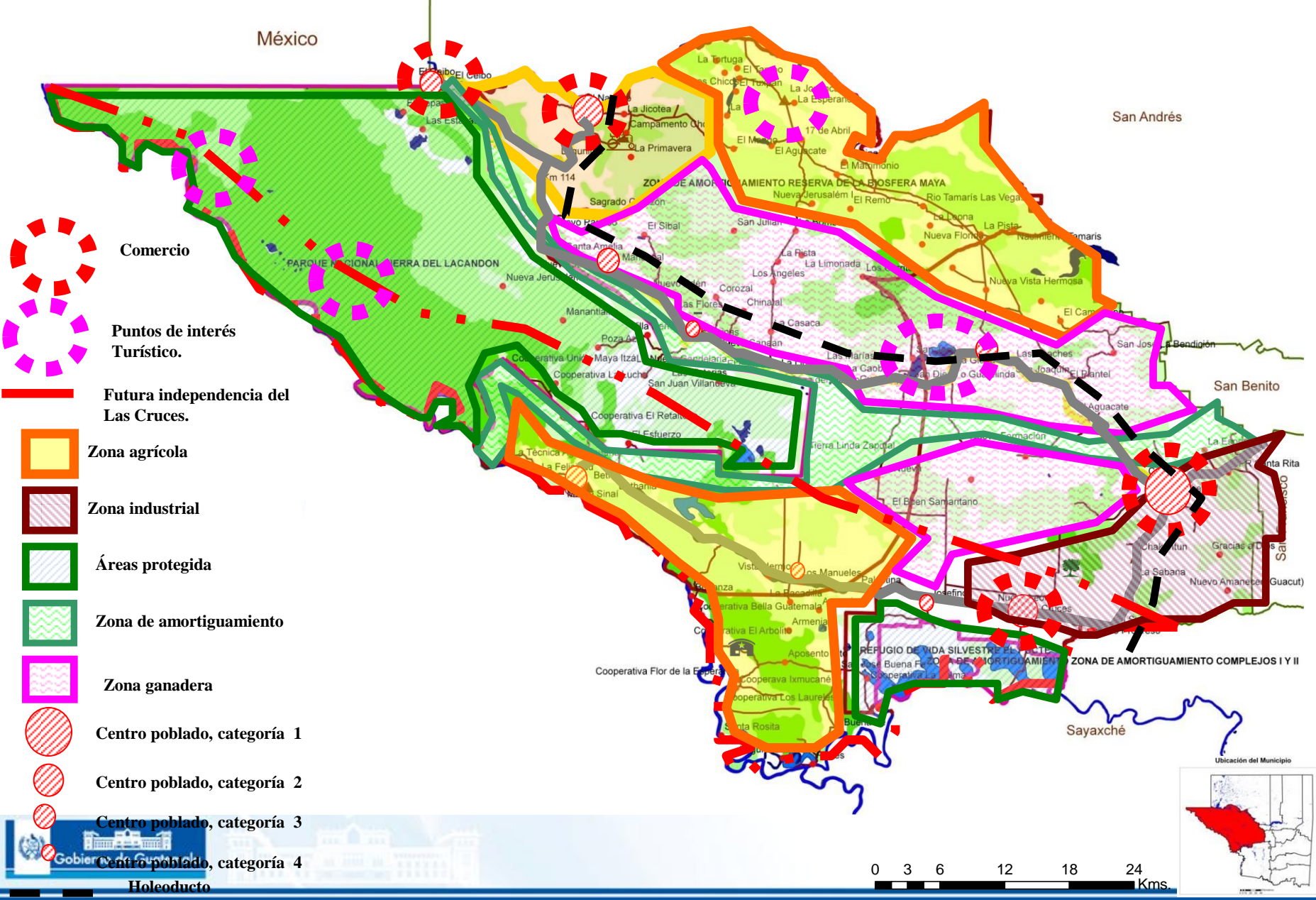
# Municipal land use planning

México

San Andrés

San Benito

Ubicación del Municipio



Comercio

Puntos de interés Turístico.

Futura independencia del Las Cruces.

Zona agrícola

Zona industrial

Áreas protegida

Zona de amortiguamiento

Zona ganadera

Centro poblado, categoría 1

Centro poblado, categoría 2

Centro poblado, categoría 3

Centro poblado, categoría 4

Holoeducto

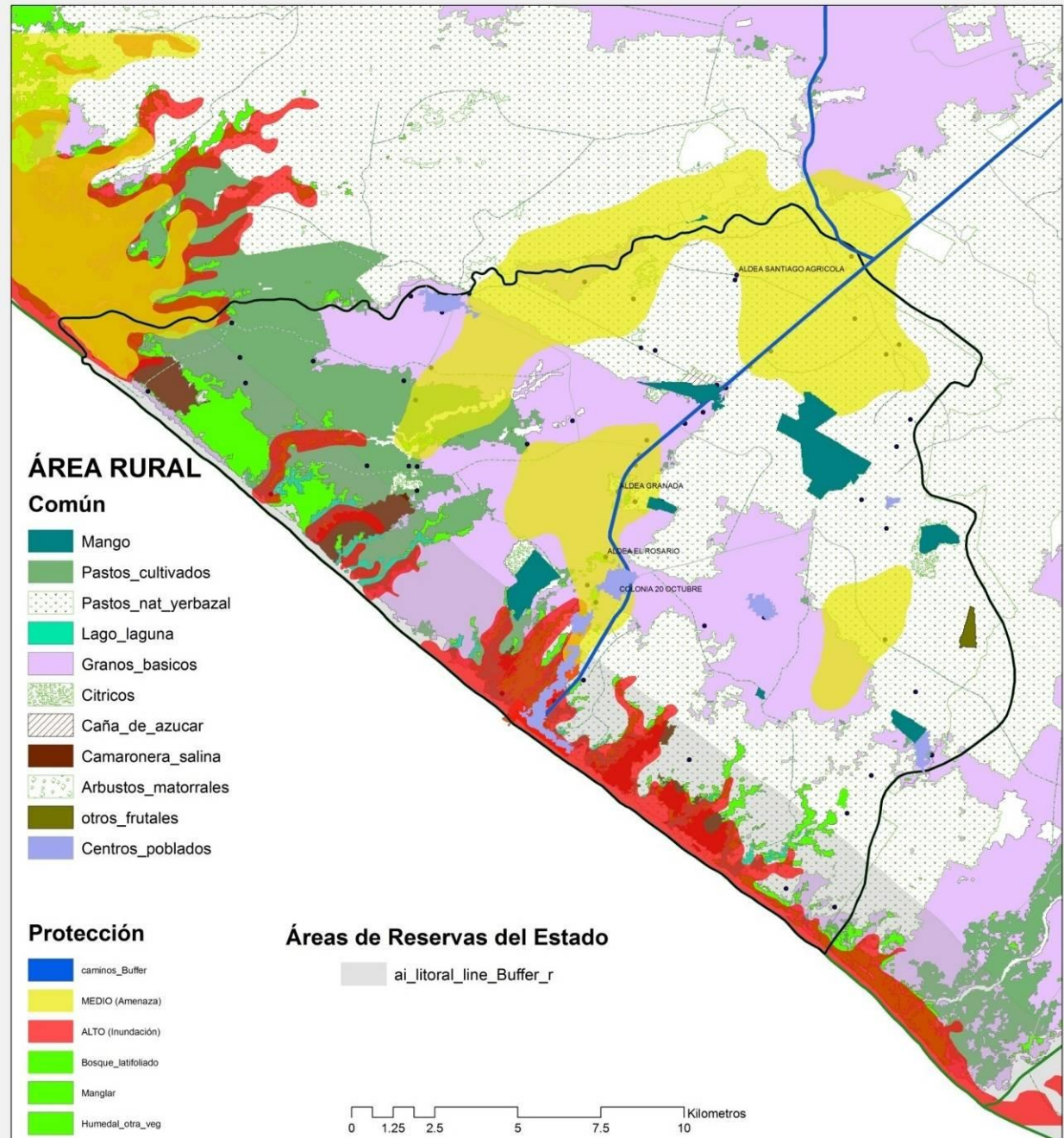


# Mapa de Plan de Uso de Suelo - Riesgo

Municipio de Champerico



## Land Management instruments



# What do we expect of SGA?

- Information for decision making: organized and in good timing
- Development options with a scientific base
- Prospective and scenario
- Not criticize but PROPOSALS: Understand politics times

